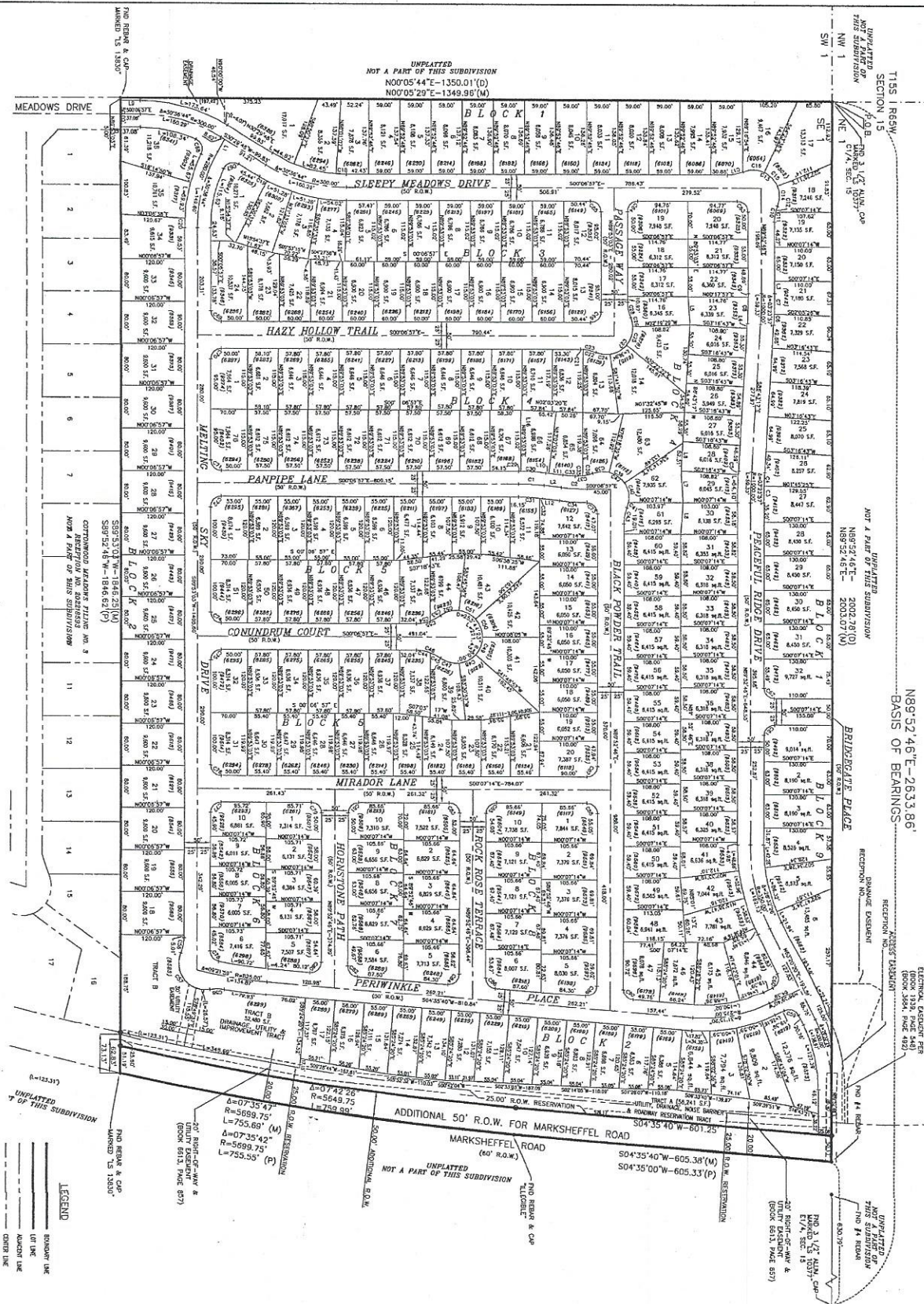


EXHIBIT A.2 DISTRICT BOUNDARY MAP

FINAL PLAT PEACEFUL RIDGE AT FOUNTAIN VALLEY SUBDIVISION

A portion of the Southeast One-Quarter (SE1/4) of Section 15, Township 15 South, Range 65 West of the 6th P.M.,
County of El Paso, State of Colorado



PINNACLE LAND SURVEYING COMPANY, INC.
925 W. CUCHARRAS ST., C.S., CO 634-0751

NOTICE: ACCORDING TO COLORADO LAW YOU MUST CONSIDER ANY LEGAL ACTION BASED UPON ANY DEFECT IN THIS SURVEY WITHIN THREE YEARS AFTER YOU FIRST DISCOVER SUCH DEFECT. IN NO EVENT MAY ANY ACTION BE TAKEN MORE THAN FIVE YEARS FROM THE DATE OF THE CERTIFICATION SHOWN HEREON.

FINAL PLAT, PEACEFUL RIDGE AT FOUNTAIN VALLEY SUBDIVISION
DRAWN BY: MWD/EEB
CHECKED BY: JWF
JOB NO. 04007460
DATE: 10/11/06
SHEET 2 OF 2

SCALE 1" = 100'

LEGEND

- BOUNDARY LINE
- UTI LINE
- ADJACENT LINE
- CENTER LINE
- SECTION LINE
- EASEMENT LINE
- SET A BEARING & DISTANCE
- ROAD AS SHOWN
- PLATTED BOUNDARY LINE
- RECORDED BOUNDARY LINE



UNPLATTED
NOT A PART OF THIS SUBDIVISION
S04°35'40"W-605.36'(P)
S04°35'00"W-605.33'(P)

UNPLATTED
NOT A PART OF THIS SUBDIVISION
S04°35'40"W-605.36'(P)
S04°35'00"W-605.33'(P)

APPROPRIATE LOCATION
ELECTRIC UTILITY PER
BOOK 1394, PAGE 489

UNPLATTED
NOT A PART OF THIS SUBDIVISION
S04°35'40"W-605.36'(P)
S04°35'00"W-605.33'(P)