

WHEN RECORDED RETURN TO:
 WHITE BEAR ANKELE TANAKA & WALDRON
 2154 East Commons Avenue, Suite 2000
 Centennial, CO 80122

Peaceful Ridge Metropolitan District
 El Paso County, Colorado

SPECIAL DISTRICT PUBLIC DISCLOSURE

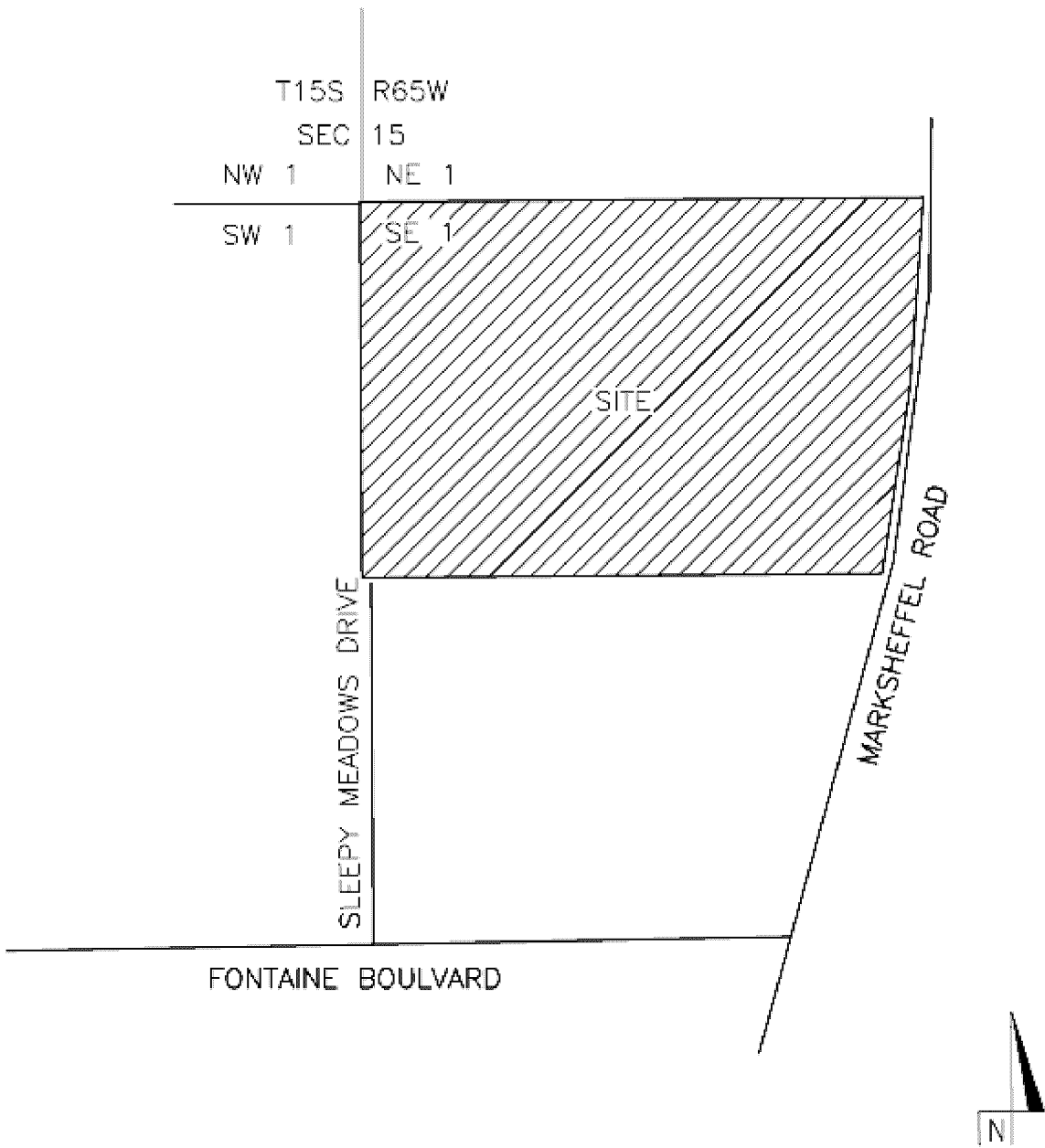
Pursuant to § 32-1-104.8 C.R.S.

Name of District:	Peaceful Ridge Metropolitan District (“ District ”)
Powers of the District:	All powers authorized in § 32-1-1004, C.R.S., including, but not limited to, fire protection, mosquito control, parks or recreational facilities or programs, traffic and safety controls, sanitation services, street improvements, television relay and translator facilities, transportation, water services, and solid waste disposal, subject to the limitations contained in the District’s Service Plan.
Service Plan:	The District’s Service Plan, which can be amended from time to time, includes a description of the District’s powers and authority. A copy of the District’s Service Plan is available from the Division of Local Government.
	Peaceful Ridge Metropolitan District is authorized by Title 32 of the Colorado Revised Statutes to use a number of methods to raise revenues for capital needs and general operations costs. These methods, subject to the limitations imposed by section 20 of Article X of the Colorado Constitution, include issuing debt, levying taxes, and imposing fees and charges. Information concerning directors, management, meetings, elections and current taxes are provided annually in the Notice to Electors described § 32-1-809(1), C.R.S., which can be found at the District office, on the District’s web site, on file at the Division of Local Government in the State Department of Local Affairs, or on file at the office of the clerk and recorder of each county in which the special district is located.
District Boundaries:	A map of the District’s boundaries is attached hereto as Exhibit A. Please note that the District’s boundaries may change from time to time. Please contact the District for the latest information.

EXHIBIT A
District Boundary Map

See the attached two (2) pages.

VICINITY MAP



For and on Behalf of
 Pinnacle Land Surveying Co., Inc.
 John W. Towner
 P.L.S. #25968

PINNACLE LAND SURVEYING, INC.		
626 W. Cucharas, Colorado Springs, CO 80905		
VICINITY MAP		
TITLE: PEACEFUL RIDGE AT FOUNTAIN VALLEY		
SCALE: N.T.S.	DRAWN BY: ETRB	FILE: 04007400WRK
DATE: 11/08/08	CHECKED BY: JMT	JOB NO. 04007400

